

**MELLIN & ASSOCIATES
ARCHITECTS, P.C.**
5570 East Vails Avenue
Denver, CO 80222
Phone: 303-981-2888
Fax: 303-750-1689

CONSULTANTS:

STRUCTURAL ENGINEER

Sundquist Design Group
12138 West Bayland Avenue
Lakewood, CO 80122
303-904-4855
303-904-4855

MECHANICAL ENGINEER

Green & Associates, Inc.
725 South Xenon Ct.
Suite 201
Lakewood, CO 80228
303-761-1270
303-987-2804 Fax
Contract: Jeff A. Green P.E.

ELECTRICAL ENGINEER

Alber Engineering Inc
10489 Bradford RD #102
Lakewood, CO 80228
303-985-3260
303-987-2804 Fax
Contract: Clarence Bernall

PROJECT TITLE:

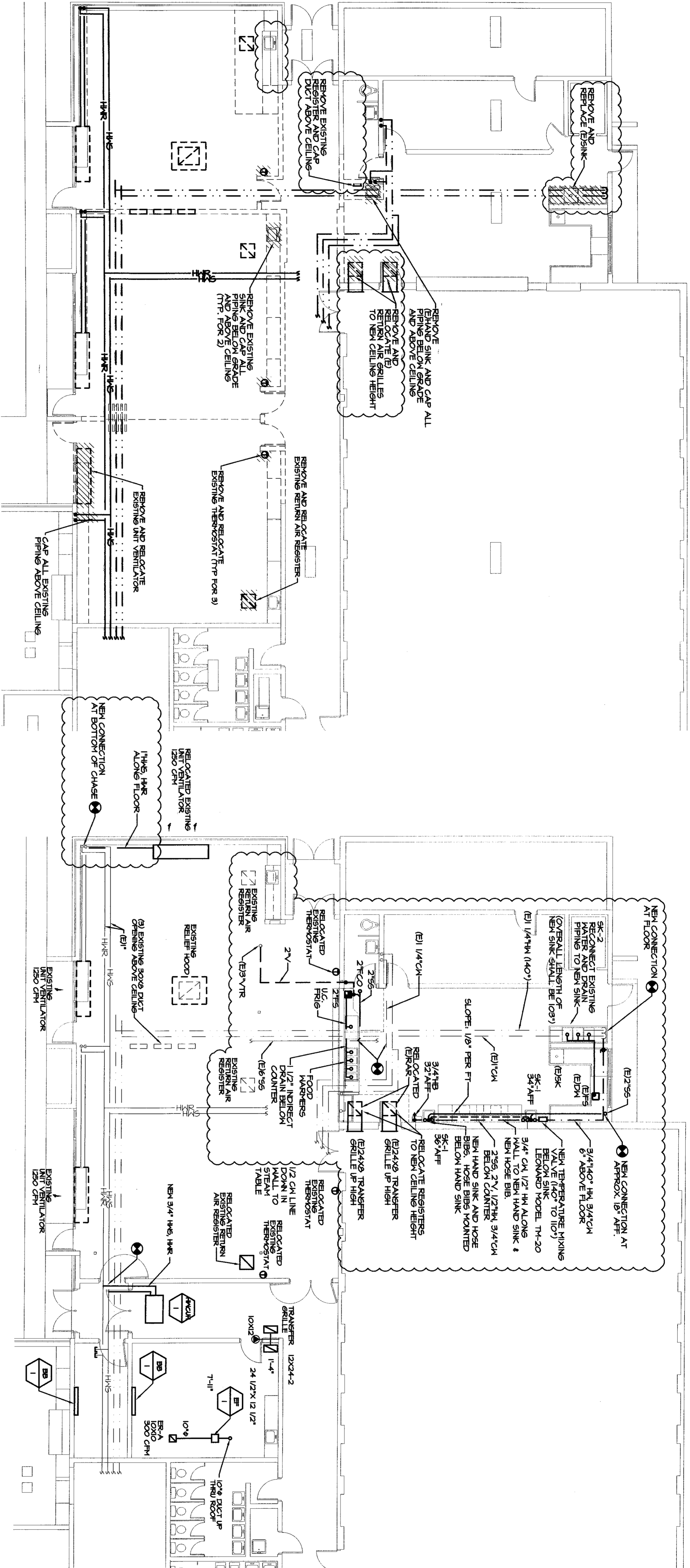
Classroom Addition &
Cafeteria Renovation
for
Cache La Poudre
Elementary School

Poudre School District

ISSUED	REVISIONS
D.O's	04-07-08
95% CD's	05-01-08
100% CD's	05-08-08
RECORD DOCUMENTS	06-08-07

TITLE
CAFETERIA
MECHANICAL
PLANS

M-2
SHEET M-2 OF 24



GENERAL NOTES:
1. RELOCATE EXISTING CONTROLS WITH UNITS.
2. EXTEND CONTROL SYSTEMS AND SCHEME TO NEWLY RELOCATED UNIT VENTILATORS.

